



Have Faith... In yourself... In others... In God.

Admission Arrangements: Consultation

We are currently consulting on our admission arrangements for 2027.

Proposed admission arrangements can be found [here](#) on the school website, alongside details of who to contact, should you have any comments to make about the proposed arrangements.



Friends of Lancaster Christ Church

Many thanks to all who were able to support the Friends 'Adopt a Teddy' event this week. Over **£60** was raised for school funds. We still have a number of teddies who are looking for their 'forever home' and will be offering another opportunity to 'Adopt a Teddy' on

Tuesday 2nd December from **3.15pm** in the **hall**.

Good luck Choir!

Good luck to our Choir Church Choir who will be entertaining residents at Dolphinlee House on **Tuesday** with their beautiful singing.



Many thanks to Jayne, our Choral Director, for organising.

Friends of Lancaster Christ Church Christmas Disco

Thursday 4th December 2025

FS/KS1: **5.00 - 5.45pm** / KS2: **6 - 7pm**

Only £4 per child!

Refreshments available to purchased on the night.

Parents are welcome to stay (staffroom available for parent refreshments), or to collect their child at the end.

Please note that **all** children must be collected by an adult at the end of the disco. Children in KS2 will not be permitted to walk home without an adult.



School Worship



This half term, our Collective Worship will focus on the value of **Compassion**

"As God's chosen ones, holy and beloved, clothe yourselves with compassion, kindness, humility, meekness, and patience. Bear with one another and forgive each other; just as the Lord has forgiven you."

Colossians 3:12-13



This week our theme was 'Serving others with compassion and kindness'. On Monday, we revisited the work of the **Children's Society** and distributed the cardboard candles which can be used to collect coins in order to support their vital work. If returned to school by **Friday 12th December**, donations will be blessed at the **Christingle Service** at Christ Church on **Sunday 14th December**, before being passed on to the Children's Society.

Next week, we will begin our journey through Advent, lighting the first candle on our Advent wreath as we reflect on the theme of 'Coming to the Rescue'.



St. John's Hospice Elf Run

We are delighted to be supporting the work of St. John's Hospice by hosting an 'Elf Run' in school on **Monday 15th December**.

All children should come to school in the school PE kit on this day. Elf hats will be provided!

If you are able to support this event, children will be bringing home sponsor forms next week, or if



preferred, you can donate via our [fundraising page](#).

Many thanks in advance for your support.

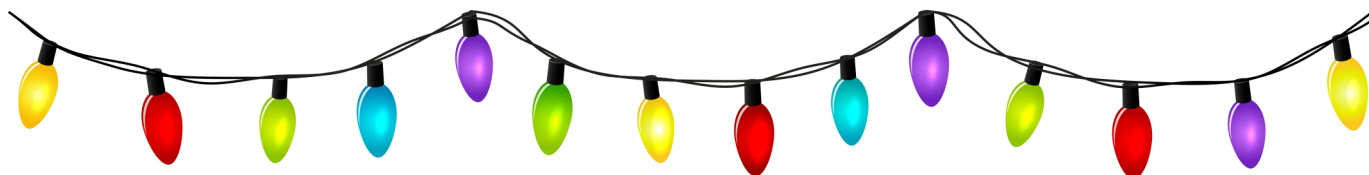


Key dates for your diary:

Term dates for the 2025 - 2026 academic year are available to view on our school website

Friday 19th December 2025: Last day of Autumn term

Monday 5th January 2026: School reopens for Spring term



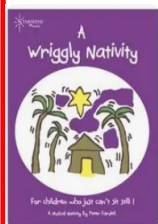
Foundation / KS1 Nativity

Children in Reception, Year 1 and Year 2 will present 'A Wriggly Nativity' on:

Tuesday 9th December (2pm / 5.30pm) &

Wednesday 10th December (5.30pm)

In the school hall.



Tickets will be available to purchase via Parent Pay from **Monday 1st December**, priced at £1 each and will initially be limited to a **total of 3** due to availability of space.

KS2 Christmas Concert

Children in **Years 3, 4, 5 & 6** will be hosting a **Christmas Concert** for parents / carers on:



Wednesday 10th December at 9.30am

in the school hall.

The Concert will give the children the opportunity to showcase some of the work that they have been doing in music with Mrs Smith.

Coffee and mince pies will be served from 9.15am.

Tickets will be available to purchase via Parent Pay from **Monday 1st December**, priced at £1 each and will initially be limited to **one per key stage 2 family** due to availability of space.

Christmas Service

Parents and Carers are warmly welcomed to join our **Christmas Service** at Christ Church Church on **Wednesday 17th December at 1.45pm**, during which we will draw the term to a close with a celebration of Jesus' as 'The Light of the World'.



Christmas Lunch and Jumper Day



Thursday 18th December is our school Christmas **Lunch and Jumper Day**.

Children may come to school wearing a Christmas jumper instead of their school jumper.

Information about Christmas Lunch will be sent home next week.

Choir Church Eucharist Service



Parents and Carers are warmly welcomed to join us at our final **Eucharist Service** of 2025, led by our wonderful Choir Church Choir on **Friday 12th December at 3.30pm** in the school hall.

An opportunity to reflect and praise, this beautiful service brings together our school and church community and is suitable for all ages.

Reminder: Spring term

School reopens for all children on **Monday 5th January 2026**.



Christ Church, Lancaster

A vibrant, inclusive, worshipping community

You're warmly invited to join us for:



Services this Sunday:

8.30am Holy Communion (said service)
10.30am Parish Eucharist with Children's Church
4pm Advent Evensong



Midweek services:

Wednesday 5.30pm Meditation
Wednesday 6pm Evening Prayer
Friday 9.30am Holy Communion

Toy Service

14th December 10.30am

During the service, we will take a collection of toys for local families.

Please bring unwrapped new, or good condition pre-loved toys to the service for blessing.



Please note - no soft toys!

YOU'RE INVITED TO JOIN THE

LITTLE SEEDLINGS

A stay and play baby and toddler group
9-10.30am every Tuesday

CHRIST CHURCH HALL
WYRESDALE RD.
LANCASTER
LA5 2EA

9-10AM STAY AND PLAY
10-10.30AM SNACKS, SHAKES AND STORIES
NO NEED FOR RESERVATIONS
welcome

ALL ARE WELCOME!
A warm, welcoming, inclusive space with proper coffee and milk for grown ups.

Stroller and wheelchair accessible with changing facilities
01524 620100
WWW.CHRISTCHURCHLANCASTER.CO.UK

CHRIST CHURCH, LANCASTER INVITES YOU TO A

Christmas Tree Festival

FRIDAY 5TH AND SATURDAY 6TH DECEMBER
12-4PM

SUNDAY 7TH DECEMBER 12-4PM
WITH A CANDLELIT ADVENT SERVICE AT 4PM

Free of Charge
Stills Music Refreshments

TREES AND DECORATIONS SPONSORED AND DECORATED BY LOCAL BUSINESSES AND COMMUNITY GROUPS
FUNDS RAISED HELP SUPPORT LANCASTER AND DISTRICT HOMELESS ACTION SERVICE

Christ Church, Wyresdale Road

Sunday 30th November

Choral Evensong for Advent

4pm

Everyone warmly welcome for a reflective service, watching and waiting for Christ the Light of the World in prayer and music.

Join us for

Christingle

on Sunday 14th December at 4pm

Sharing the light of Christ and raising funds for the Children's Society this Christmas

Darkness to Light

Candlelit music, readings and prayers for Advent, concluding the Christmas Tree Festival

Sunday 7th December 4pm

Everyone welcome!

For enquiries about Christenings, Weddings and Funerals; and for pastoral and faith support, please contact:

Rev'd Carol Backhouse
Vicar, Christ Church, Lancaster
revcarolbackhouse@gmail.com 07857 449724

Our Prayer for this week:
Almighty God, as your kingdom dawns, turn us from the darkness of sin to the light of holiness, that we may be ready to meet you in our Lord and Saviour, Jesus Christ. **Amen.**



CHRIST CHURCH, LANCASTER
INVITES YOU TO A

Christmas Tree Festival

FRIDAY 5TH AND SATURDAY 6TH DECEMBER
12-6PM

SUNDAY 7TH DECEMBER 12-4PM
WITH A
CANDLELIT ADVENT SERVICE AT 4PM

*Free Admission
Stalls Music Refreshments*

TREES ARE SPONSORED AND DECORATED BY
LOCAL BUSINESSES AND COMMUNITY GROUPS

FUNDS RAISED HELP SUPPORT LANCASTER
AND DISTRICT HOMELESS ACTION SERVICE

Christ Church School Christingle Service
17th December 2pm in Christ Church, Wyresdale Road.

Families welcome as we share this special service
to remember the light of Christ.

As part of the service,
a collection is taken for the work of the Children's Society.
In the next few days, your child may bring home a collection candle - and you're
invited to support the work of this national charity by returning the candle and a
donation at the service.

*"It was really
hard to find the
courage to ask
for help. But The
Children's Society
took so much
pressure off.
The bad feelings
disappeared."*

Naomi



**Thank you so much for
Christingling to support
children like Naomi.**

The funds you raise through your
Christingle make such a huge
difference to the lives of so many
young people in this country.

Thanks to incredible people
like you, together, we can protect
every childhood.



The
Children's
Society

What is a Christingle?

**Christingle is a joyful celebration
that brings families and
communities together to have
fun, share the light of Jesus,
and spread a message of hope.**

Christingle was originally started
by the Moravian Church, and in
1968, John Pearson of
The Children's Society held a
Christingle celebration in Lincoln
Cathedral as a way of raising funds
to help children and young people.

Since then, thousands more
churches, schools, and
communities across the country
have joined the tradition and
come together each year to sing,
celebrate, and help the young
people who need someone
to be there for them.



**Christingles are easy to make,
and each element has a special
meaning, helping to tell the
Christian story:**

- The orange represents the world.
- The red ribbon (or tape) symbolises the love and blood of Christ.
- The sweets and dried fruit represent all of God's creations.
- The lit candle represents Jesus' light in the world, bringing hope to people living in darkness.

During the service, each person
takes a Christingle and the candles
are all lit to create a warm glow.
This symbolises the light of Christ
and bringing hope to people living
in darkness. It's a really special
moment and is usually one of the
highlights of the celebration.

The money you raise through
your Christingle makes a
huge difference for young
people – it means we can
be here for them when
they need us most. Visit
christingle.org/donate
today to give a gift.



CHRISTMAS

at Christ Church Lancaster

JOIN US TO SHARE IN GOD'S JOY, HOPE AND PEACE
IN THE BIRTH OF JESUS CHRIST.

CHRISTMAS EVE

4PM CRIB SERVICE
FOR ALL THE FAMILY

11.30PM MIDNIGHT MASS



CHRISTMAS DAY

8.30AM SAID EUCHARIST

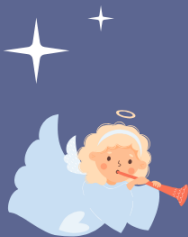
10.30AM EUCHARIST
WITH CAROLS

BOXING DAY

9.30AM SAID EUCHARIST

SUNDAY 28TH

10.30AM SERVICE ONLY



FOR MORE INFO GO TO
www.christchurchlancaster.org.uk @christchurchlancaster



A VIBRANT, INCLUSIVE,
WORSHIPPING COMMUNITY

Christ Church Choir

Fancy singing some amazing music and joining a community of supportive singers?

Why not give Christ Church Lancaster's choir a whirl this winter?

The choir will sing at:

- * Advent Choral Evensong @4pm Sunday 30th November
- * Christmas Tree Festival @4pm Sunday 7th December
- * Lessons & Carols @4pm Sunday 21st December



**REHEARSALS ON THURSDAYS 7-8.15PM
IN CHRIST CHURCH LANCASTER,
WYRESDALE ROAD.**



**13TH, 20TH & 27TH NOVEMBER
11TH & 18TH DECEMBER**



FOR MORE INFORMATION, CONTACT THE DIRECTOR OF MUSIC: GRAHAMTOFT1@AOL.COM

JUDGES LODGINGS MUSEUM

2025
**VICTORIAN
CHRISTMAS**

SATURDAY 6 - SUNDAY 7 DECEMBER

AT JUDGES LODGINGS MUSEUM

Bringing you the magic of Christmas with traditional music, beautiful decorations, kids craft and a visit to Santa.

Plus you can enjoy a festive treat at the Friends pop-up Tea Room between 12 - 3.30pm.

11am to 4pm. £5 entry for adults.
Children free. Tea room by donation.

bit.ly/JudgesLodgingsLancaster
judgeslodgings@lancashire.gov.uk

Tel. 01524 581 241

lancashire.gov.uk



Lancashire

County
Council

